



G19A



G19B



G19C



G19D



G19E



19001



19002



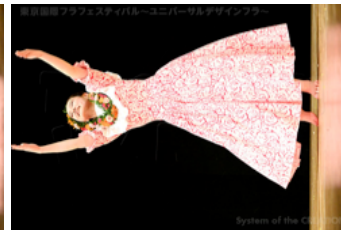
19003



19004



19005



19006



19007



19008



19009



19010



19011



19012



19013



19014



19015



19016



19017



19018



19019



19020



19021



19022



19023



19024



19025



19026



19027



19028



19029



19030



19031



19032



19033



19034



19035



19036



19037



19038



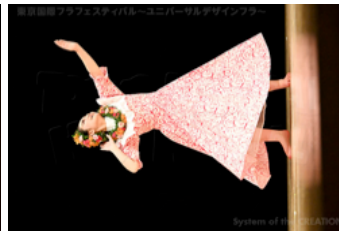
19039



19040



19041



19042



19043



19044



19045



19046



19047